

## Molecular phylogeny based on its sequences of nrDNA of some species belonging to dodder (*Cuscuta* L.) genus from various ecological sites of Turkey

Ibrahim DEMIR<sup>1</sup>, Ilhan KAYA<sup>2\*</sup>, Mustafa USTA<sup>2</sup>,  
Hikmet M. SIPAHIOĞLU<sup>3</sup>

<sup>1</sup>Bitlis Eren University, Faculty of Arts and Sciences, Department of Biology, Bitlis, Turkey; [hosap65@gmail.com](mailto:hosap65@gmail.com)

<sup>2</sup>Van Yuzuncu Yil University, Faculty of Agriculture, Department of Plant Protection, Van, Turkey; [ilhank@yyu.edu.tr](mailto:ilhank@yyu.edu.tr) (\*corresponding author); [mustafausta@yyu.edu.tr](mailto:mustafausta@yyu.edu.tr)

<sup>3</sup>Malatya Turgut Ozal University, Faculty of Agriculture, Department of Plant Protection, Malatya, Turkey; [msipahi@hotmail.com](mailto:msipahi@hotmail.com)

---

### Abstract

Nuclear ribosomal DNA (nrDNA) sequence data of the *Cuscuta* genus, which have been considered as one of the most popular sequences for phylogenetic inference in plants, have been studied from a phylogenetic perspective in agricultural and non-agricultural lands of Turkey. The samples of *Cuscuta* spp. were collected from different geographical regions of Turkey between the years of 2013-2015. Some other species, not available locally, were taken from the herbarium samples of some research units. In order to study the phylogenetic relations of collected species, DNA isolations were made from body tissue samples. Conserved regions on ribosomal DNA (rDNA) were amplified by universal primers via PCR method and cloned into a proper cloning vector. The cloned DNA fragments were sequenced and analysed by web-based and computer programs. DNA sequences of certain species were recorded to the National Center for Biotechnology Information (NCBI) database. Based on the morphological examination and molecular analyses of fresh and the herbarium specimen, 8 species were identified. The identified species were *C. hyalina* (Gene bank accession no. KY020420), *C. monogyna* (KY020421), *C. europaea* (KY020422), *C. palaestina* (KY020423), *C. approximata* (KY020424), *C. kurdica* (KY020427), *C. kotschyana* (KY020430) and *C. babylonica* (KY020431). The ITS (Internal Transcribed Spacer) region contains several indels in identified *Cuscuta* species with the length varying from 668 to 730 bp. Sequence divergence ranges from 1.00% to 8.00% within *Cuscuta* spp. Based on our findings, the ITS sequences provided phylogenetically informative results in combination with the secondary structures.

**Keywords:** classification; *Cuscuta* spp.; molecular phylogeny; Turkey

---

### Introduction

Dodder (*Cuscuta* spp.) is evaluated as a flowering parasitic plant in the family of Convolvulaceae according to some researchers (Yuncker, 1932; Kujit, 1969; Parker and Riches, 1993; Linao *et al.*, 2000). However, some others have been evaluating in the family of Cuscutaceae (Hadac and Chrtek, 1970; Davis,

1978; Chertek and Obsornova, 1991). About 200 species are belonging to the genus *Cuscuta* and are commonly regarded as noxious weeds or invasive plants. *Cuscuta* is the third most harmful parasite plant group in the world after *Striga* and *Orobancha* (Parker and Riches, 1993; Costea and Tardif, 2006; Costea *et al.*, 2006; Garcia *et al.*, 2014). Dodder, *Cuscuta* species, is a parasitic annual plant that infests many agricultural crops such as alfalfa, clover, beans, soy, cranberry, some members of the grass family, trees, herbaceous plants, shrubs and various ornamentals in worldwide (Yunker, 1932; Li, 1987; Dawson *et al.*, 1994; Maberley, 1997; Stefanovic and Olmstead, 2004). Members of the genus were recently implicated as vectors in the horizontal transfer of mitochondrial genes in plants (Mower *et al.*, 2004).

Dodders are lack of vegetative organs such as root or leaf. The diagnosis of these plants can only be done by observation of flower and fruit characters. In general, difficulties are encountered in diagnosis made with taxonomic characters. Therefore, the identification of molecular phylogenetic relationships in the diagnosis of these plants provides a more reliable diagnosis (Nemli *et al.*, 2015).

*Cuscuta* is an annual plant producing seeds that germinate on or near the soil surface. Germination is influenced by temperature, with an optimum at 30 °C (Benvenuti *et al.*, 2005). *Cuscuta* spp. can produce 3.000-25.000 seeds. Most of the seeds remain dormant for 5-15 years, close to the soil surface (Hutchisan and Ashton, 1979).

Yuncker (1932) has been studied the *Cuscuta* through systematic studies about evolutionary relationships, character evolution, biogeography, and speciation. Stefanovic *et al.* (2007) has been defined as the major lineages of the subgenus *Grammica*, which is the largest and the most complicated infrageneric taxon of *Cuscuta*. Costea *et al.* (2008) have examined the phylogeny-based classification of the genus *Cuscuta*.

New methods of phylogenetic analysis have made it possible to clarify the early evolution of Magnoliophyta (Podoplelova and Ryzhakov, 2005). Until 1960, systematic information was obtained based on morphological and behavioral variations. After the 1960s, biological macromolecules have played an important role in evolutionary and systematic studies (Soltis *et al.*, 1997).

PCR amplification of the ITS region on ribosomal DNA is now a popular option for phylogenetic analysis of closely related species and populations. This popularity has been enhanced by the production of universal primers that can bind to conserved rDNA regions. The data obtained as an analysis of ITS base sequences provide significant contributions to the solution of existing problems in the taxonomic categories. The relationships of the concerned taxa are usually determined by studying the ITS variations of the taxa. The major non-coding nuclear DNA region has been widely used for reconstruction, identification, and phylogenetic analysis of many plant families. ITS has been used in countless systematic studies at a wide variety of plant species and species levels (Baldwin *et al.*, 1995).

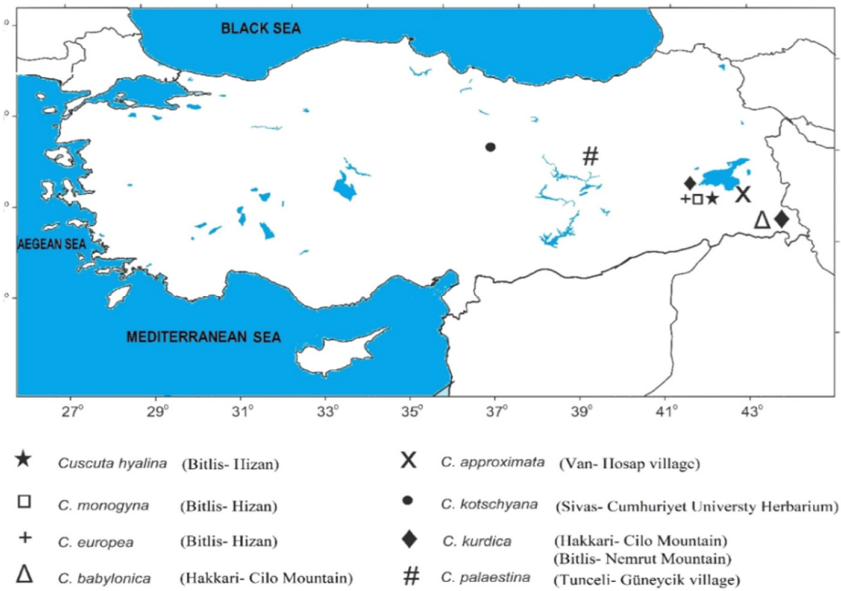
Keskin *et al.* (2017) have been reported the analysis of nrDNA's ITS sequences as an efficient tool to study the phylogeny of dodders collected from various provinces of Eastern Anatolia (Turkey). The sequences of 18S rRNA, ITS-1, 5.8S rRNA, ITS-2, and 26S rRNA regions of 4 *Cuscuta* species were determined by molecular cloning and sequencing. This study results clearly showed that the most stable secondary structure derived from the sequences obtained by universal ITS4 and ITS5 primers is a very efficient tool for the identification of *Cuscuta* species when used in combination with phylogenetic analysis.

Today, the universal primers are used for amplification and sequencing of the ITS region. Primers were originally designed for fungal rRNA amplification and are derived from fungal (*Saccharomyces*), insect (*Drosophila*), and plant (*Oryza sativa* and *Hordeum vulgare*) sequences (White *et al.*, 1990). Phylogenetic trees based on the sequence analysis results of ITS-1 or ITS-2 regions may produce results not supported by other sequences. Therefore, the results of combining the information obtained from the ITS-1 and ITS-2 regions reveal more accurate, robust, and complete trees (Baldwin *et al.*, 1995; Baldwin, 1992). This study aims to determine the phylogenetic relations of species belonging to the genus *Cuscuta* in Turkey.

## Materials and Methods

### Taxon sampling

The plant materials of *Cuscuta* spp. were either field-collected from different geographical regions of Turkey or provided by herbarium samples of some universities between the years of 2013 and 2015 (Figure 1), as indicated in the Flora of Turkey (Davis, 1978). A list of the 8 species of *Cuscuta* included in the analysis with their voucher deposition data, gene bank accession numbers, sources, collection site, and the length of amplified sequences are provided in Table 1.



**Figure 1.** Locations and the species of *Cuscuta* spp. collected from different geographical regions of Turkey

**Table 1.** EMBL accession number and the source of sequences used

Taxa	No of Sample and locality	Gen Bank accession number	Length (bp)	NCBI database
<i>Cuscuta hyalina</i>	1769 (Bitlis-Hizan)	KY020420	674	HM748873.1
<i>Cuscuta hyalina</i>	Canada	HM748873	621	
<i>Cuscuta hyalina</i>	Turkey	KX683007	674	
<i>Cuscuta monogyna</i>	1770 (Bitlis-Hizan)	KY020421	677	AY554405.1
<i>Cuscuta monogyna</i>	UK	AY554405	737	
<i>Cuscuta monogyna</i>	China	KY456203		
<i>Cuscuta monogyna</i>	Spain	DQ924569	606	
<i>Cuscuta monogyna</i>	Armenia	MH109269	636	
<i>Cuscuta kotschyana</i>	1817 (Cumhuriyet Univ. Her.)	KY020430	682	DQ924587.1
<i>Cuscuta kotschyana</i>	Iran	DQ924585	610	
<i>Cuscuta kotschyana</i>		DQ924587	611	
<i>Cuscuta europaea</i>	1785 (Bitlis-Hizan)	KY020422	730	AY554401.1
<i>Cuscuta europaea</i>	UK	AY554401	739	
<i>Cuscuta palaestina</i>	1792 (Tunceli Güneycik)	KY020423	682	AY554406.1
<i>Cuscuta palaestina</i>	UK	AY554406	721	
<i>Cuscuta approximata</i>	1808 (Van-Hoşap)			

<i>Cuscuta approximata</i>	1809 (Van-Hoşap)	KY020424	682	KU725873.1
<i>Cuscuta epithymum</i>	1810 (İzmir-Kemalpaşa)	KY020425	682	KU725873.1
<i>Cuscuta kurdica</i>	1811 (Bitlis-Nemrut Mountain)	KY020426	685	KU725873.1
<i>Cuscuta kurdica</i>	1811 (Hakkari-Cilo Mountain)	KY020427	678	DQ924613.1
<i>Cuscuta kurdica</i>	Turkey	KY020428	679	DQ924613.1
<i>Cuscuta babylonica</i>	1819 (Hakkari-Cilo Mountain)	DQ924613	607	
<i>Cuscuta babylonica</i>	Turkey	KY020431	611	DQ924578.1
<i>Cuscuta babylonica</i>	Afganistan	DQ924579	696	
<i>Cuscuta babylonica</i>		DQ924578	596	

#### *DNA isolation and PCR: amplification*

Genomic DNA was extracted either from fresh *Cuscuta* spp.

Plants collected from the fields or attempted using dried material from herbarium specimens using a commercial DNA preparation kit (Thermo Scientific, USA). Species identification of collected plant samples was conducted basically on molecular (sequence analysis and secondary structure pattern of nrDNA) and morphological (flower structure) analyses.

The major non-coding nuclear DNA region (ITS1, 5.8S, and ITS2) were amplified by polymerase chain reaction (PCR) with universal oligonucleotide primers (ITS4-5'-TCCTCCGCTTATTGATATGC-3' and ITS5-5'-GGAAGTAAAAGTCGTAACAAGG-3') of White *et al.* (1990). The amplification of the ITS1/5.8S/ITS2 region was performed by polymerase chain reaction (PCR) in a final volume of 50 µl. The PCR mixture contained: 2 µl of genomic DNA, 5 µl of 10× reaction buffer (200 mM Tris-HCl pH: 8.4, 500 mM KCl), 3 µl of MgCl<sub>2</sub> (25 mM), 1 µl of dNTPs (10 mM each), 1 µl of each primer (100 pmol), 0.4 µl of DNA polymerase, and 36.6 µl of DNase free sterile water. The thermal regime of PCR reaction was set according to White *et al.* (1990). PCR products were separated and detected in a 1.5% agarose gel as described by Sambrook (1989). The DNA fragments were isolated from the gel using Isolate II PCR and Gel Kit (Bioline, Germany). Purified DNA fragments were cloned and sequenced in both directions using two universal (SP6 and T7) primers by Iontek Company (Turkey). The accession numbers of the sequences studied in this paper have been given in Table 1 and deposited in the GenBank database.

#### *Molecular cloning and sequencing*

A total of 8 ITS sequences including ITS1/5.8S/ITS2 regions were molecularly cloned and sequenced. The upstream sense primer ITS4 and the downstream antisense primer ITS5 generated approximately 600-700 bp DNA fragments. The PCR products were cloned by the TA cloning vector into the middle of two EcoRI sites of the pGEM T easy vector (Promega, USA) by following manufacturer's instructions to generate ITS1/5.8S/ITS2 region. To transform recombinant plasmids, the JM 109 strain of *Escherichia coli* was used as competent cells. Recombinant plasmids were screened by blue/white colour screening on X-gal containing plates and isolated from individual white colonies by a commercial plasmid purification kit (Thermo Fisher, USA). To check the success of the molecular cloning the DNA inserts were excised by digestion with EcoRI and electrophoresed on a 1.5% agarose gel.

#### *Predicting the most stable secondary structure*

All possible the most stable secondary structures of ITS1/5.8S/ITS2 regions for a total of 8 species sequences were modelled using the mfold structure prediction package of CLC RNA Workbench Version 6.2 (CLC bio, Denmark). Calculating free energies of all possible secondary structures and retaining one of the

lowest energies (i.e., the most stable) is the basis of predicting thermodynamically the most stable rRNA molecule (Chastain and Tinoco, 1991).

#### *Phylogenetic analysis*

The phylogenetic analysis was performed on the ITS1/5.8S/ITS2 sequence of each species. The aligned sequences were visually inspected for possible mutations and gaps. Cladistics analyses and the relationships were performed with a computer program (CLC Main Workbench) under both parsimony and maximum likelihood criteria using 1000 bootstrap replicates. The phylogenetic tree was constructed with the CLC Main Workbench program by the Neighbour-Joining method.

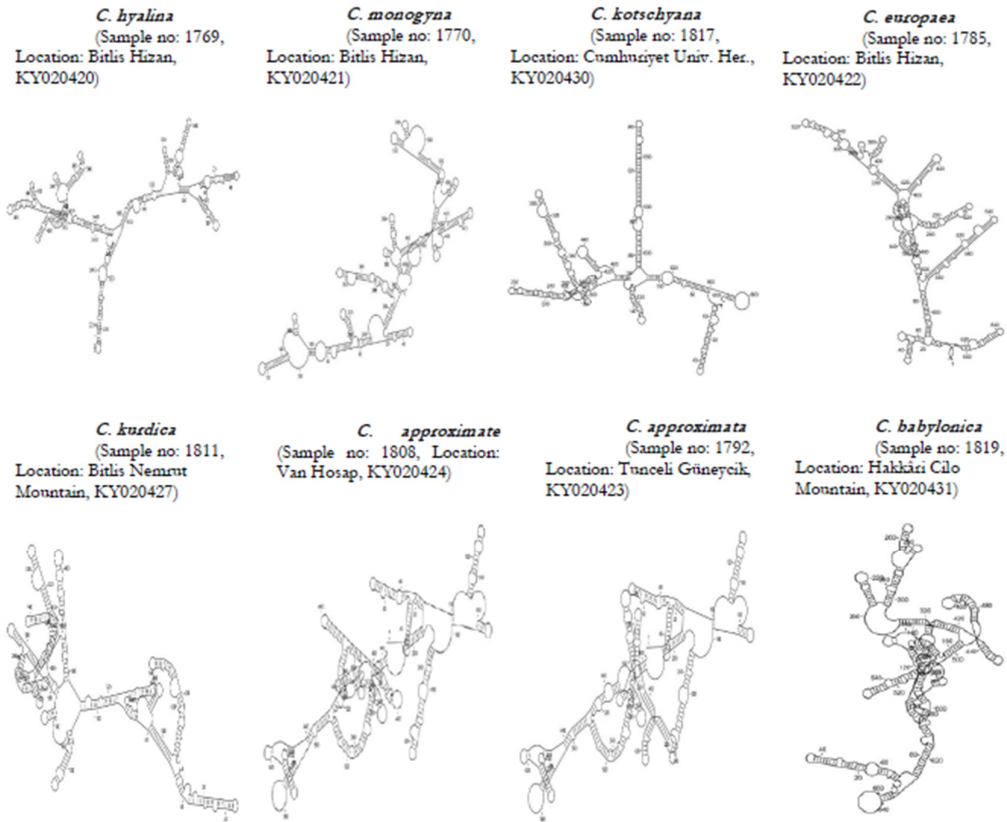
## **Results**

A total of 8 species out of 11 samples from various ecological sites of Turkey were molecularly studied for the systematic utility of nuclear ribosomal DNA sequences by assessing phylogenetic relationships in genus *Cuscuta* (Cuscutaceae). Complete ITS nucleotide sequences (including ITS1, ITS2, and the 5.8S rRNA gene) and partial sequences of 18S and 26S ribosomal RNA gene were determined by molecular cloning.

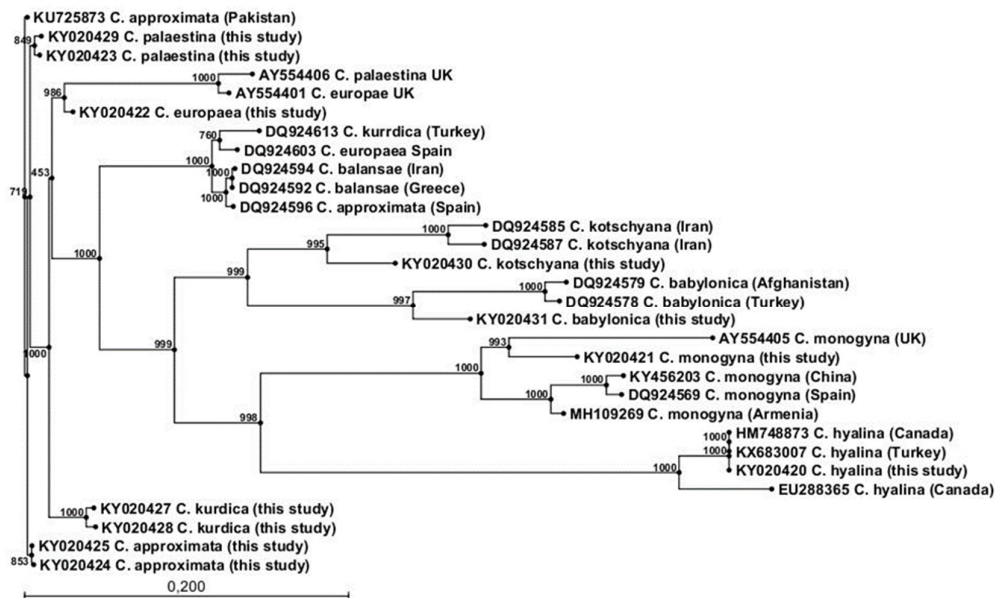
The average length of the sequenced ITS region of studied *Cuscuta* species was approximately 665 bp, as seen in Table 1. In pairwise comparisons of aligned complete ITS1 and ITS2 nucleotide sequences, species of *Cuscuta* were similar in 92-99% of each other. The species names, EMBL accession numbers, DNA length of all 8 taxa used in this study are given in Table 1. Overall, 59 variable nucleotides were observed among the sequenced species. The highest divergence was observed on *C. hyalina* in a group with twenty-three indels (deletions or insertions). The alignment of the 8 taxa indicated that *C. babylonica* was the next divergence species with eighteen indels. Seventeen variable characters were observed between *C. babylonica* and *C. kotschyana* sequences as indels clustered at the same clade.

All possible predicted secondary structures of ITS regions were modelled for 8 species of *Cuscuta* (Figure 2). The utility of secondary structure's topology has been evaluated to resolve phylogenetic relationships at the species level. *C. monogyna* contained the most frequent hairpin structures on its ITS sequence having 13 hairpin secondary structures among the 8 species analysed. The remaining species have mostly consisted of a minimum 8 and maximum 11 hairpin structures (Figure 2). Our study clearly showed that the same species consistently form similar topology in secondary structure models (Figure 2 panel f and g).

To determine the degree of relationships and diversity between *Cuscuta* species phylogenetic analyses were performed. The resulting phylogenetic tree of ITS1 and ITS2 sequences gave a robust tree providing a strong resolution (Figure 3). The neighbour-joining tree was preferred since the tree offered more information and a better resolution with 1000 bootstrap values. The method divided 8 taxa into three major clusters. *C. kotschyana*, *C. babylonica*, *C. monogyna* and *C. hyalina* were clustered in the central largest group. *C. europaea* and *C. palaestina* were placed in the same clade because of the high level of sequence similarity.



**Figure 2.** Secondary structures of ITS sequences of *Cuscuta* samples studied in this paper. Note them multitudinous hairpin structures of *C. monogyna*. of *C. hyalina* (a), *C. monogyna* (b), *C. kotschyana* (c), *C. europaea* (d), *C. kurdica* (e), *C. approximata* (f), *C. approximata* (g) *C. babylonica* (h).



**Figure 3.** Phylogenetic analysis of the twelve ITS sequences observed among the species of *C. hyalina*, *C. monogyna*, *C. europaea*, *C. palaestina*, *C. approximata*, *C. kurdica*, *C. kotschyana* and *C. babylonica*. Numbers on the branches represent the 1000 bootstrap replications in which a given branch appears

## Discussion

The molecular characteristics and the phylogenetic utility of ITS region of nuclear ribosomal DNA belonging to *Cuscuta* were analysed. ITS sequences were found suitable for phylogenetic comparisons at lower taxonomic levels. The present findings suggest that ITS sequences provide phylogenetically informative information and generate highly resolved trees with more strongly supported clades. To study phylogenetic relations among plant genera, the ITS sequences have been used widely in many weed and crop plants such as sorghum, maize, wheat, and cotton (Sonnate *et al.*, 2003).

The entire ITS region (ITS1-5.8S-ITS2) has been generated successfully using the reported ITS4 and ITS5 primers and templates of the total cellular DNA of *Cuscuta* spp. as shown in Figure 2. The ITS region of nrDNA contains 59 indels in *Cuscuta* with the length varying from 688 to 730bp. The traditional classification of *Cuscuta* species was consistent with the highly resolved phylogenetic tree constructed based on the ITS region. Based on ITS phylogeny, the 12 *Cuscuta* samples were differentiated into 8 main species.

The most stable secondary structure of ITS sequence of each defined species was constructed for all species studied in this research. Our study showed that the secondary structure of all studied species was exhibited diverse topology for each species which were enough to identify at the species level (Figure 2). It has been concluded that diverse species consistently form diverse topology in secondary structure models (Figure 2).

The combination of two molecular analyses (ITS sequencing and predicting the most stable secondary structure), was found successfully applicable in detecting and identifying dodders at the species level. Our results are in correlation with our previous study (Keskin *et al.*, 2017) conducted with the *Cuscuta* species collected from different sites of East Anatolia (Turkey). In recent years, many studies have been combining the knowledge of the prediction of the most stable secondary structures of the nucleic acids and the phylogenetic analyses of ITS structures to provide a more comprehensive understanding of the molecular basis of the species studied (Nicholas *et al.*, 2008).

Sequence analysis is very useful for phylogenetic analyses where morphological characters are inadequate (Yokoyama, 2000). Especially problems related to a diagnosis that cannot be resolved by taxonomic methods can be overcome by the evidence obtained from molecular data. One of the methods used for this purpose is ITS-PCR in the nrDNA region (Baldwin *et al.*, 1995). Recent developments in molecular biology allow the identification of plant species by identifying species-specific gene regions. ITS-PCR is the most reliable method for phylogenetic studies to be carried out at the genus and species level. For this reason, ribosomal DNA internal transcribed spacers (rDNA ITS) are frequently used in parallel with the functioning of the plant systematics and genomic regions they have in definition (Baldwin *et al.*, 1995).

## Conclusions

Due to the reduced vegetative parts of parasitic plants, flower characters are generally used in the identification of *Cuscuta* species. Because sometimes these characters are also inadequate, for the diagnosis of *Cuscuta* L. genus, it is often necessary to combine molecular methods with morphological characters. Along with the evolutionary process, it is known that there are some variations between species and species in plants necessitating revision studies. In the present study, we determined that the secondary structure of the ITS sequences is highly conserved among the species in this study supporting successfully reconstructing the phylogenies at the species level. It has been concluded that the ITS sequences of nrDNA of *Cuscuta* provide enough data to identify and classify the economically relevant species along with the distinctive structural characters.

### Authors' Contributions

All authors read and approved the final manuscript.

### Acknowledgements

This study was supported financially by the Scientific and Technological Research Council of Turkey (TÜBİTAK; project number: 113O418).

### Conflict of Interests

The authors declare that there are no conflicts of interest related to this article.

### References

- Baldwin BG (1992). Phylogenetic utility of the internal transcribed spacers of nuclear ribosomal DNA in plants: an example from the Compositae. *Molecular Phylogenetics and Evolution* 1(1):3-16. [https://doi.org/10.1016/1055-7903\(92\)90030-K](https://doi.org/10.1016/1055-7903(92)90030-K)
- Baldwin BG, Sanderson MJ, Porter JM, Wojciechowski MF, Campell CS, Donoghue MJ (1995). The ITS region of nuclear ribosomal DNA: Valuable source of evidence on angiosperm phylogeny. *Annals of the Missouri Botanical Garden* 2:250-272.
- Benvenuti S, Dinelli G, Bonetti A, Catizone P (2005). Germination ecology, emergence and host detection in *Cuscuta campestris*. *Weed Research* 45:270-278. <https://doi.org/10.1111/j.1365-3180.2005.00460.x>
- Chrték J, Osbornova J (1991). Notes on the synanthropic plants of Egypt: 3. *Grammica campestris* and other species of family Cuscutaceae. *Folia Geobotanica Phytotaxin* 26:287-314. <https://doi.org/10.1007/BF02912750>
- Costea M, Nesom GL, Stefanovic S (2006). Taxonomy of *Cuscuta gronovii* and *Cuscuta umbrosa* (Convolvulaceae). *SIDA, Contributions to Botany* 22:197-207.
- Costea M, Tardif FJ (2006). The biology of Canadian weeds. *Cuscuta campestris*, *C. gronovii*, *C. umbrosa*, *C. epithimum* and *C. epilinum*. *Canadian Journal of Plant Science* 86:293-316. <https://doi.org/10.4141/P04-077>
- Davis PH (1978). *Flora of Turkey and the East Aegean Islands*. Edinburgh University Press, Edinburgh.
- Dawson JH, Musselman LJ, Wolswinkel P, Dorr I (1994). Biology and control of *Cuscuta*. *Review of Weed Science* 6:265-317. <https://doi.org/10.3732/ajb.1300449>
- García MA, Costea M, Kuzmina M, Stefanović S (2014). Phylogeny, character evolution, and biogeography of *Cuscuta* (dodders; Convolvulaceae) inferred from coding plastid and nuclear sequences. *American Journal of Botany* 101(4):670-690. <https://doi.org/10.3732/ajb.1300449>
- Hadac E, Chrték J (1970). Notes on the taxonomy of Cuscutaceae. *Folia Geobotanica Phytotaxin* 5:443-445.
- Hutchison JM, Ashton FM (1979). Effect of desiccation and scarification on the permeability and structure of the seed coat of *Cuscuta campestris*. *American Journal of Botany* 66:40-46. <https://doi.org/10.1002/j.1537-2197.1979.tb06191.x>
- Keskin F, Kaya I, Usta M, Demir I, Sipahioglu HM, Nemli Y (2017). Molecular cloning and sequence analysis of the its region of nuclear ribosomal DNA for species identification in dodders (*Cuscuta*; Convolvulaceae). *International Journal of Agriculture and Biology* 19(6):1447-1451. <https://doi.org/10.17957/IJAB/15.0442>
- Kujit J (1969). *The biology of parasitic flowering plants*. University of California Press, Berkeley.
- Li YH (1987). Parasitism and integrated control of dodder on soybean, in parasitic flowering plants. Weber HC, Forstreuter W (Eds). Marburg, Germany, pp 497-500.
- Liao GI, Chen MY, Kuoh CS (2000). *Cuscuta* L. (Convolvulaceae) in Taiwan. *Taiwania* 45:226-234.
- Mabberley DJ (1997). *The plant-book: A portable dictionary of the vascular plants*. Cambridge University Press, Cambridge, UK.



- Mower JP, Stefanović S, Young GJ, Palmer JD (2004). Gene transfer from parasitic to host plants. *Nature* 432:165-166. <https://doi.org/10.1038/432165b>
- Nemli Y, Kaya I, Tamer ŞR (2015). *Cuscuta campestris*. Turkey invasive plants catalog. Middle Black Sea Pass. Agricultural Research Station Directorate, Tokat.
- Tippery NP, Les DH (2008). Phylogenetic analysis of the internal transcribed spacer (ITS) region in Menyanthaceae using predicted secondary structure. *Molecular Phylogenetics and Evolution* 49:526-537. <https://doi.org/10.1016/j.ympev.2008.07.019>
- Parker C, Riches CR (1993). Parasitic weeds of the world. Biology and control. CAB International, Wallingford.
- Podoplelova Y, Ryzhakov G (2005). Phylogenetic analysis of the order Nymphaeales based on the nucleotide sequences of the chloroplast ITS 2-4 region. *Plant Science* 169(3):606-611. <https://doi.org/10.1016/j.plantsci.2005.05.006>
- Sambrook J, Fritsch EF, Maniatis T (1989). Molecular cloning: A laboratory manual, second edition, cold spring harbor laboratory press. Cold Spring Harbor, NY.
- Soltis DE, Soltis PS, Nickrent DL, Johnson LA, Hahn WJ, Hoot SB, ... Sytsma KJ (1997). Angiosperm phylogeny inferred from 18S ribosomal DNA sequences. *Annals of the Missouri Botanical Garden* 84:1-49. <https://doi.org/10.2307/2399952>
- Sonnate G, Glasco I, Pignone D (2003). ITS sequence analysis and phylogenetic inference in the genus *Lens* Mill. *Annals of Botany* 91:49-54. <https://doi.org/10.1093/aob/mcg007>
- Stefanović S, Olmstead RG (2004). Testing the phylogenetic position of a parasitic plant (*Cuscuta*, Convolvulaceae, Asteridae): Bayesian inference and the parametric bootstrap on data drawn from three genomes. *Systematic Biology* 53 (3):384-399. <https://doi.org/10.1080/10635150490445896>
- Stefanović S, Kuzmina M, Costea M (2007). Delimitation of major lineages within *Cuscuta* subgenus *Grammica* (dodder; Convolvulaceae) using plastid and nuclear DNA sequences. *American Journal of Botany* 94:568-589.
- White TJ, Bruns T, Lee S, Taylor JW (1990). Amplification and direct sequencing of fungal ribosomal RNA genes for phylogenetics. In: PCR protocols: A guide to methods and applications. (Innis MA, Gelfand DH, Sninsky JJ, White (Eds). Academic Press, New York, USA pp 315-322.
- Yokoyama J, Suzuki M, Iwatsuki K, Hasebe M (2000). Molecular phylogeny of *Coriaria*, with special emphasis on the disjunct distribution. *Molecular Phylogenetics and Evolution* 14(1):11-19. <https://doi.org/10.1006/mpv.1999.0672>
- Yunker TG (1932). The genus *Cuscuta*. *Memoirs of the Torrey Botanical Club* 18:113-331.



The journal offers free, immediate, and unrestricted access to peer-reviewed research and scholarly work. Users are allowed to read, download, copy, distribute, print, search, or link to the full texts of the articles, or use them for any other lawful purpose, without asking prior permission from the publisher or the author.

**License** - Articles published in *Notulae Botanicae Horti Agrobotanici Cluj-Napoca* are Open-Access, distributed under the terms and conditions of the Creative Commons Attribution (CC BY 4.0) License.

© Articles by the authors; UASVM, Cluj-Napoca, Romania. The journal allows the author(s) to hold the copyright/to retain publishing rights without restriction.